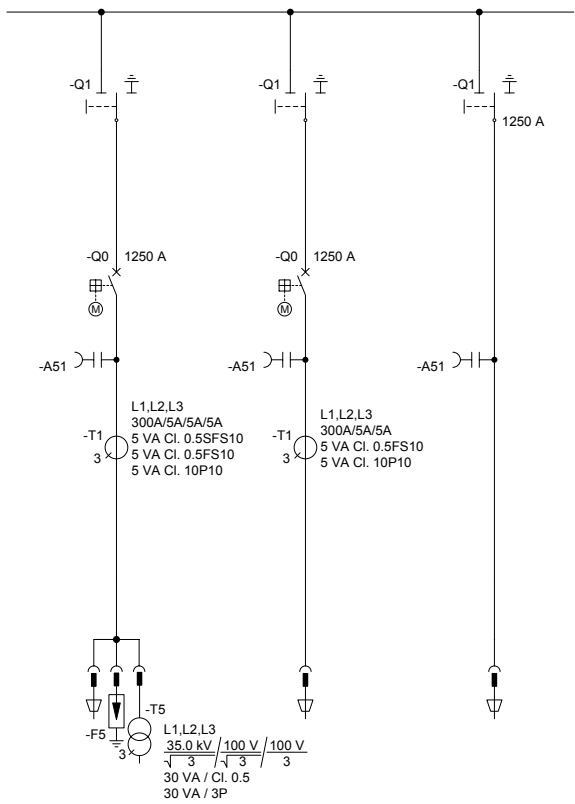


=H01      =H02      =H03  
 +H01      +H02      +H03  
 =HZ04     =HZ05      =HZ06



Copyright (C) SIEMENS AG 2012 All Rights Reserved

A

B

C

D

E

F

A

B

C

D

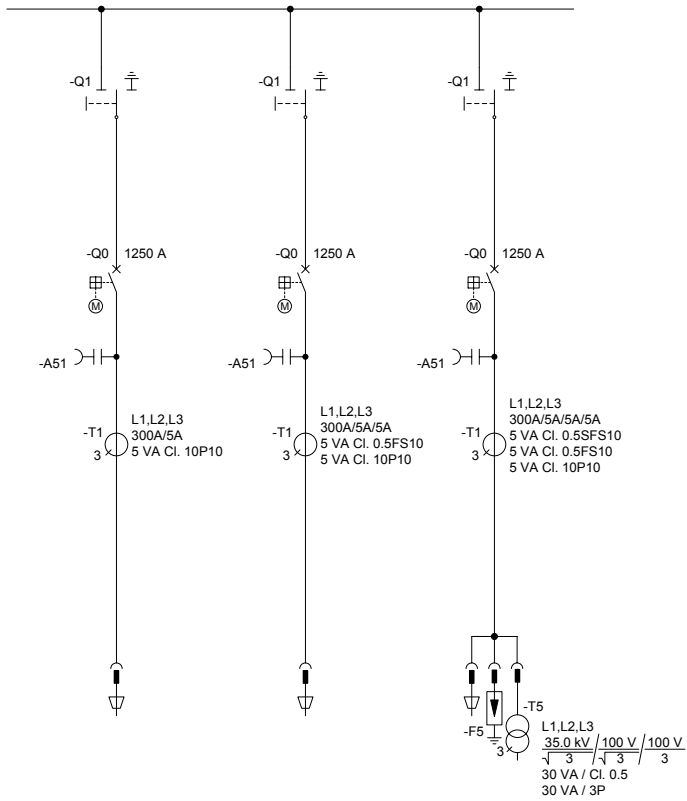
E

F

System/rated frequency 3-50 Hz      Operating voltage 35.0 kV      Rated voltage 40.5 kV      Rated short-time withst. curr. 25.0 kA (3 s)      Rated normal current 1250 A

		Date	18.04.2013		<b>SIEMENS</b>	8DA10 8DA/B 8DAB-23453	8DAB-23453	=H00	B01	
		Created by	Gubanov					+H00		Sh.No 01+
		Checked by								
Issue	Revision	Date	Name	Standard	35 kV	Orig. / Repl. f. / Repl. by	Single Line Diagram		2	

=H04      =H05      =H06  
 +H04      +H05      +H06  
 =HZ05      =HZ03      =HZ04



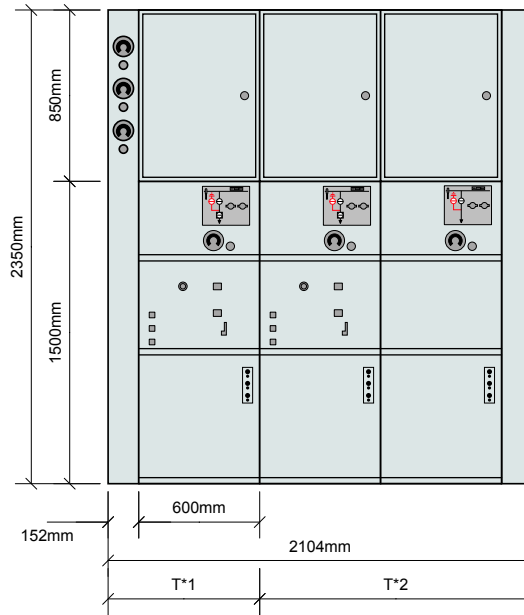
System/rated frequency 3-50 Hz      Operating voltage 35.0 kV      Rated voltage 40.5 kV      Rated short-time withst. curr. 25.0 kA (3 s)      Rated normal current 1250 A

Copyright (C) SIEMENS AG 2012 All Rights Reserved

		Date	18.04.2013		<b>SIEMENS</b>	8DA10 8DA/B 8DAB-23453	8DAB-23453	=H00	B02	
		Created by	Gubanov					=H00		Sh.No 02- 2
		Checked by								
Issue	Revision	Date	Name	Standard	35 kV	Orig. / Repl. f. / Repl. by	Single Line Diagram			

# FRONT VIEW

=H01      =H02      =H03  
 +H01      +H02      +H03  
 =HZ04      =HZ03      =HZ06



Copyright (C) SIEMENS AG 2012 All Rights Reserved

Load data and minimum distances	
1.) Permanent loads	
Fv Vertical single load	12 kN
2.) Non-permanent loads	
pa Liveload	9 kN/m <sup>2</sup>
3.) Minimum distances	
Operating aisle	≥ 800 mm *)
Minimum wall clearance left or right	≥ 500 mm **)
Wall clearance left or right	≥ 100 mm **)
Height of ceiling	≥ 2550 mm

The location and detail diagrams have symbolic character only and do not show the actual scope of supply.

System/rated frequency  
3~50 Hz

Operating voltage  
35.0 kV

Rated voltage  
40.5 kV

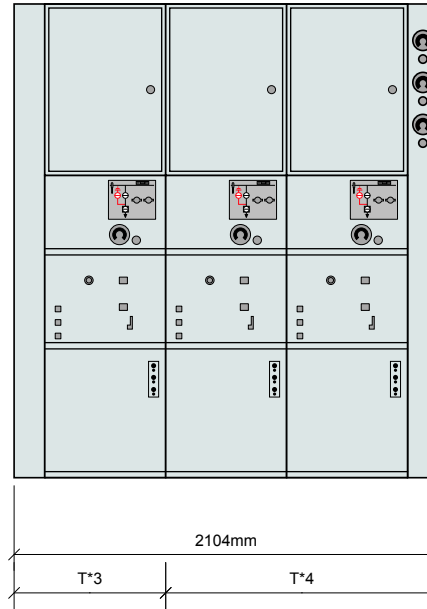
Rated short-time withst. curr.  
25.0 kA (3 s)

Rated normal current  
1250 A

		Date	18.04.2013	<b>SIEMENS</b>		8DA10	8DAB-23453		=H00	
		Created by	Gubanov			8DA/B		+H00	B01	
		Checked by		8DAB-23453				Sh.No 01+		
Issue	Revision	Date	Name	Standard	35 kV	Orig. / Repl. f. / Repl. by	Location diagram			2

### FRONT VIEW

=H04      =H05      =H06  
 +H04      +H05      +H06  
 =HZ05    =HZ03      =HZ04



Copyright (C) SIEMENS AG 2012 All Rights Reserved

Load data and minimum distances	
1.) Permanent loads	
Fv Vertical single load	12 kN
2.) Non-permanent loads	
pa Liveload	9 kN/m²
3.) Minimum distances	
Operating aisle	≥ 800 mm *)
Minimum wall clearance left or right	≥ 500 mm **)
Wall clearance left or right	≥ 100 mm **)
Height of ceiling	≥ 2550 mm

The location and detail diagrams have symbolic character only and do not show the actual scope of supply.

System/rated frequency  
3~50 Hz

Operating voltage  
35.0 kV

Rated voltage  
40.5 kV

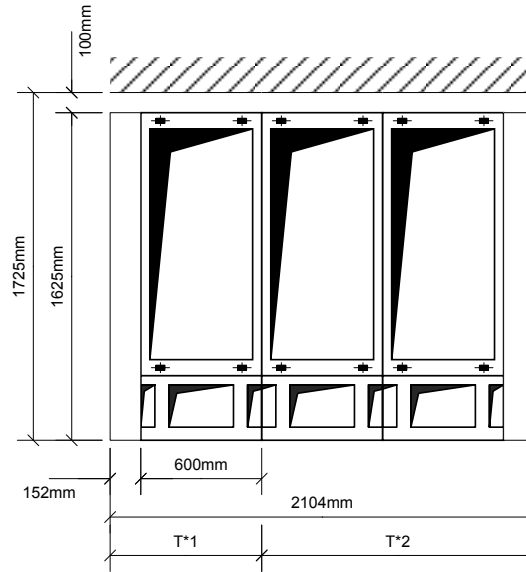
Rated short-time withst. curr.  
25.0 kA (3 s)

Rated normal current  
1250 A

		Date	18.04.2013	<b>SIEMENS</b>		8DA10	8DAB-23453		=H00	
		Created by	Gubanov			8DA/B			+H00	B02
		Checked by				8DAB-23453				Sh.No 02-
Issue	Revision	Date	Name	Standard	25 kV	Orig. / Repl. f. / Repl. by	Location diagram			2

PLAN VIEW

=H01      =H02      =H03  
 +H01      +H02      +H03  
 =HZ04      =HZ03      =HZ06



Copyright (C) SIEMENS AG 2012 All Rights Reserved

Load data and minimum distances	
1.) Permanent loads	
Fv Vertical single load	12 kN
2.) Non-permanent loads	
pa Liveload	9 kN/m <sup>2</sup>
3.) Minimum distances	
Operating aisle	≥ 800 mm *)
Minimum wall clearance left or right	≥ 500 mm **)
Wall clearance left or right	≥ 100 mm **)
Height of ceiling	≥ 2550 mm

For information only, not to be used for construction. Further construction data can be found in the related operating and instruction manual

\*) According to national regulations  
 \*\*) In case of switchable devices at busbar a minimum distance of 800mm (alternatively left or right side) is required.  
 T\*) Transportation Unit

For fittings at the busbar observe additional height of panels

- 1) The floor penetration for the high-voltage terminations should take the form of a continuous slot for each row of panels. Beam beneath the panel junction is possible.
- 2) Floor penetration required if there is a beam beneath the panel junction.

Tolerances:  
 Fall (max.) 1mm/1m, 2mm over the total length, flatness 1mm within 1m measured length. Adjust tolerances with SHMS.

System/rated frequency	Operating voltage	Rated voltage	Rated short-time withst. curr.	Rated normal current
3~50 Hz	35.0 kV	40.5 kV	25.0 kA (3 s)	1250 A

		Date	18.04.2013	<b>SIEMENS</b>		8DA10	8DAB-23453		=H00	
		Created by	Gubanov			8DA/B		+H00	B01	
		Checked by				8DAB-23453			Sh.No 01+	
Issue	Revision	Date	Name	Standard	35 kV	Orig. / Repl. f. / Repl. by	Constructional Data			2

